

# PRODUCT INFORMATION PACKET

Model No: 184TTFBD6028

Catalog No: GT1213A

5 HP General Purpose Motor, 3 phase, 1800 RPM, 230/460 V, 184TC Frame, TEFC  
Three Phase TEFC Motors



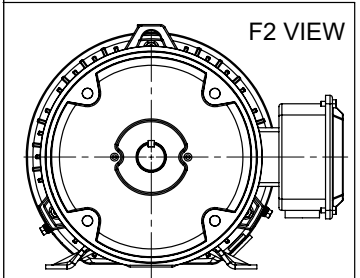
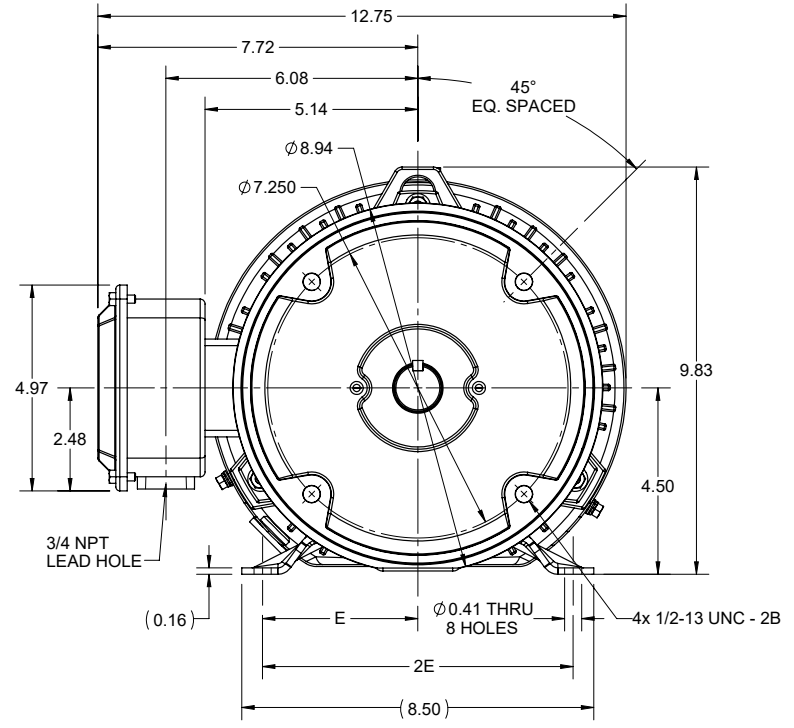
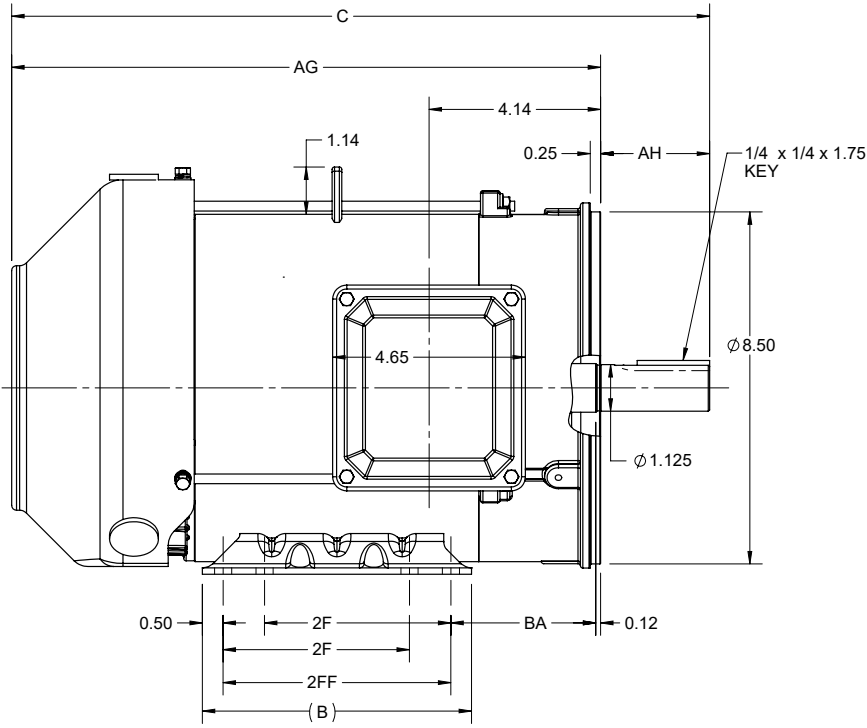
### Nameplate Specifications

|                        |                |                            |                             |
|------------------------|----------------|----------------------------|-----------------------------|
| Output HP              | 5 Hp           | Output KW                  | 3.7 kW                      |
| Frequency              | 60 Hz          | Voltage                    | 230/460 V                   |
| Current                | 13.2/6.6 A     | Speed                      | 1765 rpm                    |
| Service Factor         | 1.15           | Phase                      | 3                           |
| Efficiency             | 89.5 %         | Power Factor               | 80                          |
| Duty                   | Continuous     | Insulation Class           | F                           |
| Design Code            | A              | KVA Code                   | K                           |
| Frame                  | 184TC          | Enclosure                  | Totally Enclosed Fan Cooled |
| Thermal Protection     | No             | Ambient Temperature        | 40 °C                       |
| Drive End Bearing Size | 6206           | Opp Drive End Bearing Size | 6205                        |
| UL                     | Listed         | CSA                        | Y                           |
| CE                     | Y              | IP Code                    | 43                          |
| Hazardous Location     | DIVISION 2 T2B |                            |                             |

### Technical Specifications

|                       |                              |                       |                     |
|-----------------------|------------------------------|-----------------------|---------------------|
| Electrical Type       | Squirrel Cage Inverter Rated | Starting Method       | Line Or Inverter    |
| Poles                 | 4                            | Rotation              | Selective Clockwise |
| Resistance Main       | 2.75 Ohms                    | Mounting              | Rigid Base          |
| Motor Orientation     | Horizontal                   | Drive End Bearing     | Ball                |
| Opp Drive End Bearing | Ball                         | Frame Material        | Rolled Steel        |
| Shaft Type            | T                            | Overall Length        | 16.85 in            |
| Frame Length          | 6.85 in                      | Shaft Diameter        | 1.125 in            |
| Shaft Extension       | 2.75 in                      | Assembly/Box Mounting | F1/F2 CAPABLE       |
| Outline Drawing       | SS600200-200                 | Connection Drawing    | EE7308              |

| DASH NO. | 4    |       |      | 3    |      |      |       | 2    |      |          | 1     |
|----------|------|-------|------|------|------|------|-------|------|------|----------|-------|
|          | B    | C     | E    | 2E   | 2F   | 2FF  | AG    | AH   | BA   | MOUNTING | FRAME |
| 100      | 6.50 | 15.85 | 3.75 | 7.50 | 4.50 | 5.50 | 13.22 | 2.62 | 3.50 | F1 OR F2 | 182TC |
| 200      |      | 16.85 |      |      |      |      | 14.22 |      |      |          | 184TC |



|   |                      |                               |
|---|----------------------|-------------------------------|
| DRAWING REVISION<br>C   | REVISION BY<br>BISWA | REV DATE/© DATE<br>19/01/2021 |
| ECO<br>CR-0000645   | APPROVED BY<br>GNK   | DATE<br>19/01/2021            |
| ECO DESCRIPTION<br>DRAWING UPDATED  |                      |                               |
| <small>COPYRIGHT (PER REVISION DATE) REGAL BELOIT AMERICA, INC. ALL RIGHTS RESERVED. PROPRIETARY AND CONFIDENTIAL INFORMATION - THIS DOCUMENT IS THE PROPERTY OF REGAL BELOIT AMERICA, INC. (OWNER) AND CONTAINS OWNER'S PROPRIETARY INFORMATION. ANY PERSON, CORPORATION OR OTHER FIRM RECEIVING IT IS DEEMED, BY RECEIVING IT, TO AGREE THAT IT, AND/OR ANY PART OF IT, SHALL NOT BE DISCLOSED TO ANY PERSON, CORPORATION OR OTHER ENTITY, DUPLICATED, AND/OR USED, EXCEPT AS EXPRESSLY APPROVED IN WRITING IN ADVANCE BY OWNER. THIS DOCUMENT SHALL BE RETURNED TO OWNER UPON REQUEST. IT MAY BE SUBJECT TO CERTAIN RESTRICTIONS UNDER APPLICABLE EXPORT CONTROL LAWS AND REGULATIONS.</small> |                      |                               |

PRIMARY DIMENSIONS ARE INCH  
DIMENSIONS IN [BRACKETS]  
ARE FOR REFERENCE ONLY

|                                   |   |
|-----------------------------------|---|
| DRAWN BY<br>PRIYA                 | Regal Beloit America, Inc.                            |
| DATE<br>08/03/2018                |   |
| APPROVED BY<br>SBD                | DESCRIPTION<br><b>OUTLINE</b><br>182/184TC FR TEFC RS |
| DATE<br>08/03/2018                | MATERIAL  |
| REFERENCE                         | PROCESS/FINISH  |
| THIRD ANGLE<br>PROJECTION         | SIZE<br>B   |
| DRAWING NUMBER<br><b>SS600200</b> | SHEET<br>1 OF 1                                       |



| NO.  | REVISION                                       | BY & DATE      | CHK | ANG   | TOLERANCES UNLESS SPECIFIED |        | FINISH  | DRAWN RM 11/20/1990 |        |                    |           |        |
|--|--|----------------|-----|-------|-----------------------------|--------|---|---------------------|--------|--------------------|-----------|--------|
|  |  |                |     |       | DEC.                        | INCHES |   |                     |        |                    |           |        |
| 5  | CHG TO REGAL LOGO                              | SL 09/10/2015  | AB  |       |                             |        |   | CHK ML 11/21/1990   |        |                    |           |        |
| 4  | REVISED IEC NOTATIONS                          | MSG 11/15/2011 | CMN | .X    | ±.1                         |        |   | APPD SAS 04/24/2003 |        |                    |           |        |
| 3  | ADDED IEC NOTATIONS... (U1), (V1) ETC. MU95194 | MSG 5/10/2010  | MJS | .XX   | ±.02                        |        |   | SCALE 1=1           |        |                    |           |        |
| 2  | ADDED THE OPTIONAL CORD CONNECTION MU46318     | RDH 04/24/2003 | DRS | .XXX  | ±.005                       |        | TITLE CONNECTION DIAGRAM<br>3Ø - DUAL VOLTAGE MOTOR | REF                 |        |                    |           |        |
| 1  | REDRAWN  | RM 11/20/1990  |     | .XXXX | ±.0005                      |        | MAT'L.  | FMF                 |        |                    |           |        |
|  |  |                |     |       | ±7'30"                      |        |   | PREV                |        |                    |           |        |
| THIS DRAWING IN DESIGN AND DETAIL IS OUR PROPERTY AND MUST NOT BE USED EXCEPT IN CONNECTION WITH OUR WORK ALL RIGHTS OF DESIGN AND INVENTION ARE RESERVED THIS IS AN ELECTRONICALLY GENERATED DOCUMENT - DO NOT SCALE THIS PRINT |  |                |     |       |                             |        | RFP   | CAD FILE ee7308     | SIZE A | DRAWING NO. EE7308 | PAGE OF 5 | REV. 5 |
|  |  |                |     |       |                             |        | DIST WP   |                     |        |                    |           |        |



**P.O. BOX 8003  
WAUSAU, WI 54401-8003  
PH. 715-675-3311**

**CERTIFICATION DATA SHEET**

**CUSTOMER:**  
**ORDER #:** SS600200  
**CONN. DIAGRAM:** EE7308  
**WINDING #:** HE31124020 3

**CUSTOMER PO #:**  
**MODEL #:** 184TTFBD6028 AA  
**CUSTOMER PART #:**  
**MOUNTING:** F1/F2 CAPABLE

**TYPICAL MOTOR PERFORMANCE DATA**

| HP  | KW        | SYNC. RPM       | F.L. RPM        | FRAME            | ENCLOSURE  | KVA CODE | DESIGN   |        |
|-----|-----------|-----------------|-----------------|------------------|------------|----------|----------|--------|
| 5&3 | 3.70&2.24 | 1800            | 1755&1462       | 184TC            | TEFC       | J        | B        |        |
| PH  | Hz        | VOLTS           | AMPS            | START TYPE       | DUTY       | INSL     | S.F.     | AMB° C |
| 3   | 60/50     | 230/460&190/380 | 13/6.5&10.2/5.1 | LINE OR INVERTER | CONTINUOUS | F7       | 1.15/1.0 | 40     |

|                       |           |                      |      |                      |      |                          |      |                   |
|-----------------------|-----------|----------------------|------|----------------------|------|--------------------------|------|-------------------|
| <b>FULL LOAD EFF:</b> | 89.5&86.5 | <b>3/4 LOAD EFF:</b> | 89.5 | <b>1/2 LOAD EFF:</b> | 88.5 | <b>GTD. EFF</b>          | 88.5 | <b>ELEC. TYPE</b> |
| <b>FULL LOAD PF:</b>  | 80&77     | <b>3/4 LOAD PF:</b>  | 75   | <b>1/2 LOAD PF:</b>  | 64   | <b>SQ CAGE INV RATED</b> |      |                   |

| F.L. TORQUE LB-FT | LOCKED ROTOR AMPS | L.R. TORQUE LB-FT | 220 % | B.D. TORQUE LB-FT | 290 % | F.L. RISE° C |
|-------------------|-------------------|-------------------|-------|-------------------|-------|--------------|
| 15                | 99 / 49.5         | 33                | 42    | 290 %             | 60    |              |

| SOUND PRESSURE @ 3 FT. DBA | SOUND POWER DBA | ROTOR WK^2 LB-FT^2 | MAX. WK^2 LB-FT^2 | SAFE STALL TIME SEC. | STARTS / HOUR | APPROX. MOTOR WGT LBS. |
|----------------------------|-----------------|--------------------|-------------------|----------------------|---------------|------------------------|
| 50                         | 60              | -                  | -                 | 15                   | 2             | -                      |

**\*\*\* SUPPLEMENTAL INFORMATION \*\*\***

| DE BRACKET TYPE        | ODE BRACKET TYPE | MOUNT TYPE | ORIENTATION | SEVERE DUTY | HAZARDOUS LOCATION       | DRIP COVER     | SCREENS | PAINT         |
|------------------------|------------------|------------|-------------|-------------|--------------------------|----------------|---------|---------------|
| C-FACE                 | STANDARD         | RIGID      | HORIZONTAL  | FALSE       | DIVISION 2 T2B           | FALSE          | NONE    | BLUE (ENAMEL) |
| BEARINGS DE ODE        | GREASE           | SHAFT TYPE | SPECIAL DE  | SPECIAL ODE | SHAFT MATERIAL           | FRAME MATERIAL |         |               |
| BALL BALL<br>6206 6205 | POLYREX EM       | T          | NONE        | NONE        | 1144 STRESSPROOF (C-223) | ROLLED STEEL   |         |               |

| THERMO-PROTECTORS |            |          |          | THERMISTORS |       |      | SPACE HEATERS |       |
|-------------------|------------|----------|----------|-------------|-------|------|---------------|-------|
| THERMOSTATS       | PROTECTORS | WDG RTDS | BRG RTDS | NONE        | FALSE | NONE | NONE          | VOLTS |
| NONE              | NOT        | NONE     | NONE     |             |       |      |               |       |

| INVERTER                    |                                   |
|-----------------------------|-----------------------------------|
| <b>TORQUE:</b>              | CONSTANT 10:1/VARIABLE 10:1       |
| <b>INV. HP SPEED RANGE:</b> | NONE                              |
| <b>ENCODER:</b>             | NONE                              |
| <b>O</b>                    | NONE                              |
| <b>T</b>                    | PPR                               |
| <b>E</b>                    | NONE                              |
| <b>S</b>                    | NONE                              |
| <b>* * *</b>                |                                   |
| <b>PREPARED BY:</b>         | Fareeda Dudekula                  |
| <b>DATE:</b>                | 05/28/2018 04:44:24 AM            |
| <b>FORM</b>                 | 3531 REV.3 02/07/99               |
| <b>**</b>                   | Subject to change without notice. |

| INVERTER                    | CONTROL                           | SPACE HEATERS |
|-----------------------------|-----------------------------------|---------------|
| <b>TORQUE:</b>              | CONSTANT 10:1/VARIABLE 10:1       |               |
| <b>INV. HP SPEED RANGE:</b> | NONE                              |               |
| <b>ENCODER:</b>             | NONE                              |               |
| <b>O</b>                    | NONE                              |               |
| <b>T</b>                    | PPR                               |               |
| <b>E</b>                    | NONE                              |               |
| <b>S</b>                    | NONE                              |               |
| <b>* * *</b>                |                                   |               |
| <b>PREPARED BY:</b>         | Fareeda Dudekula                  |               |
| <b>DATE:</b>                | 05/28/2018 04:44:24 AM            |               |
| <b>FORM</b>                 | 3531 REV.3 02/07/99               |               |
| <b>**</b>                   | Subject to change without notice. |               |

**MARATHON ELECTRIC CORPORATION**

TYPICAL PERFORMANCE CURVE for AC MOTOR

Customer

Curve at

460

Volts

HP 5&3

PHASE 3

Model No 184TTFBD6028

60

HZ

VOLTS 230/460&190/380

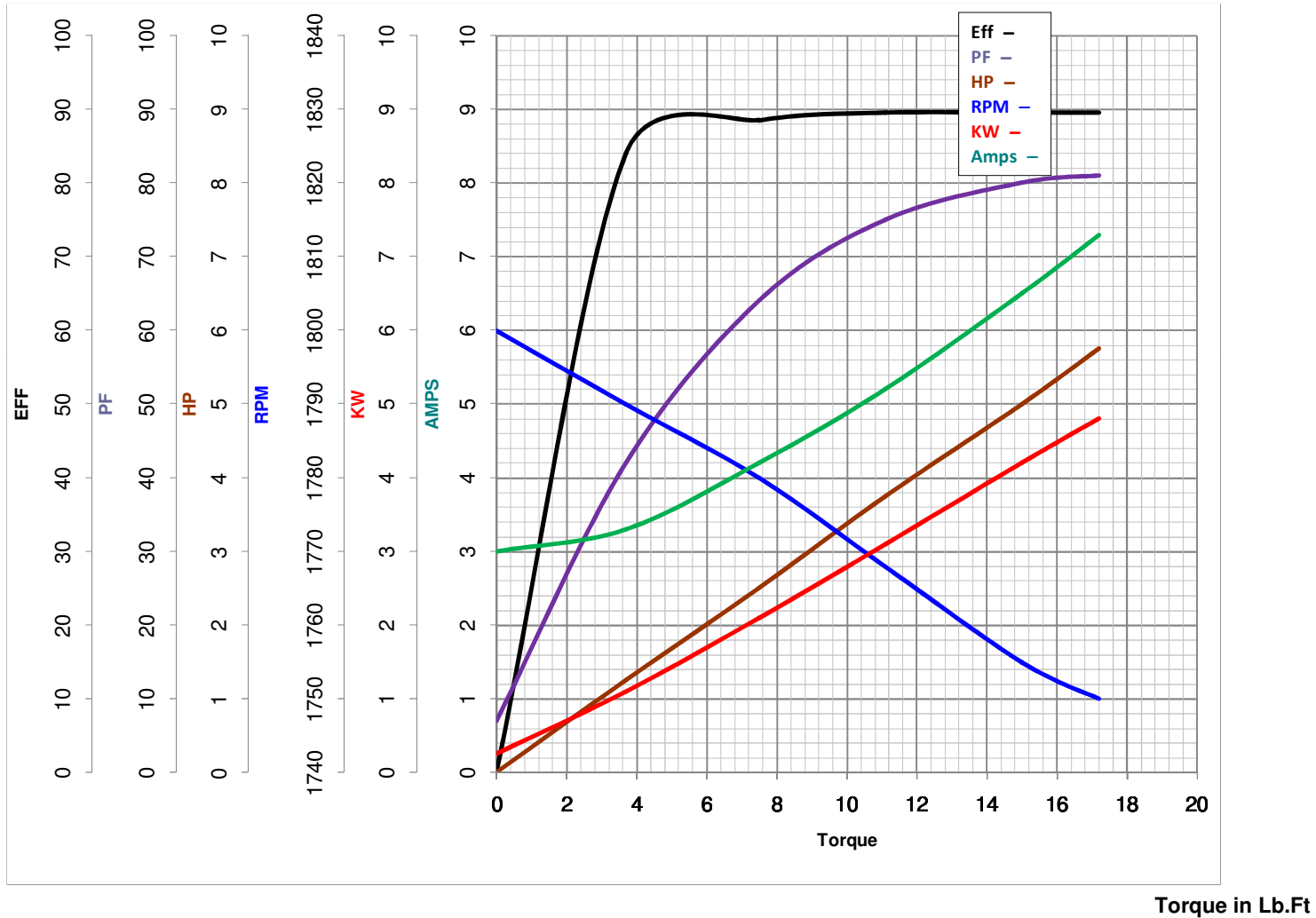
5

HP

Catalog No GT1213A

HZ 60&50

RPM 1755&1462



FL TORQUE 15 Lb.Ft  
 BD TORQUE 42.0 Lb.Ft  
 LR TORQUE 33 Lb.Ft

FL AMPS 13/6.5  
 PU TORQUE 27.0 Lb.Ft  
 LR AMPS 49.5

WINDING HE31124020-3 Prepared By FAREEDA

Date 5/28/2018